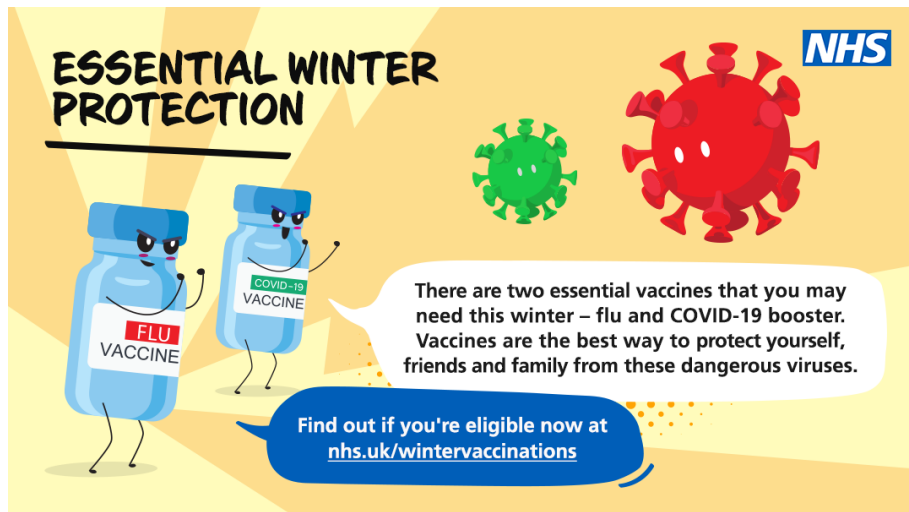




Rushcliffe

RUSHCLIFFE - GREAT PLACE • GREAT LIFESTYLE • GREAT SPORT

Please keep testing this Autumn



The Borough Council reminds everyone to take a COVID-19 regular lateral flow test at home or at one of the [Community Testing](#) sites until further notice.

Remember if anyone has symptoms they should [book a test](#).

A reminder anyone aged 16 or 17 can walk in for their COVID-19 vaccination at selected sites without needing to book an appointment. Locally to Rushcliffe the closest site is Queen's Medical Centre.

People can walk in for a booster vaccine at selected sites if they are eligible and have received notification from the NHS to do so.

As well as booster vaccinations, those over 16 are being urged to take up the offer of first and second doses if they haven't already. You can find your nearest vaccination site and book an appointment on the [NHS website](#) or by calling 119.

The public are also being reminded to come forward for their flu jab to maximise their protection ahead of winter. You can find out more about who is eligible and where to get a flu vaccine [here](#). For all enquiries on Vaccination appointments please visit [Nottingham and Nottinghamshire's CCG website](#). For any questions, please email media@rushcliffe.gov.uk.

Get great discounts and prizes when you combat climate change with Green Rewards!



Councillors Richard and Sue Mallender are encouraging all to join Green Rewards and earn great discounts, vouchers and prizes at local businesses and projects in their community for playing their part to combat climate change and achieve net zero!

[Sign up for free now](#) or download the Green Rewards app on iOS and Android. Search for 'Notts; Green Rewards' in your device's app store.

Rushcliffe and all fellow eight local Councils in Notts have joined forces to fund the app and web platform, building on the success of similar campaigns at local universities.

It means you can accumulate points and earn discounts and vouchers at local businesses for many activities you do every day at home or out and about that help lower your carbon footprint, supporting our Carbon Clever project and Climate Change Strategy.

[Read more on our website.](#)

West Bridgford's Christmas Lights Switch On returns on Saturday November 27!

Rushcliffe Borough Council

Christmas
IN WEST BRIDGFORD

THE WEST BRIDGFORD WAY

WEST BRIDGFORD
CHRISTMAS LIGHTS

SWITCH ON

Saturday November 27, 10am to 6pm

www.westbridgfordway.co.uk
WestBridgfordWay WestBWay

RUSHCLIFFE - GREAT PLACE • GREAT LIFESTYLE • GREAT SPORT

West Bridgford's free Christmas Lights Switch On makes a long-awaited return on Saturday November 27 from 10am until 6pm with live music, food and gift market, street theatre entertainment and a firework spectacular!

The seasonal festivities will take place on Central Avenue in the town throughout the day with entertainment for all the family ahead of the countdown to the lights turn on at 5pm by our Mayor Cllr Sue Mallender.

The food and gift market will showcase a selection of the region's and borough's finest designers and producers, offering a chance to buy a range of seasonal treats to put a smile on the face of a friend or loved one.

From 10am people can enjoy the market and from midday can listen to local djs, singers and performers on the stage in Central Avenue and accompanying performance street art.

All the fun leads to the streets being illuminated with thousands of sparkling lights with a low noise but no less spectacular fireworks finale show. [Read more on our website.](#)

Shortlisted nominees announced for the Celebrating Rushcliffe Awards



The shortlisted nominees for this year's Celebrating Rushcliffe Awards have been announced!

The awards this year are celebrating the Borough's wonderful volunteers, businesses and environmentalists, clubs, organisations, and the best of its health and wellbeing and food and drink sectors, mindful of the impact COVID-19 has had on every part of the community and local enterprise.

30 groups and individuals have been shortlisted for this year's accolades and all will in due course be invited to a ceremony at Rushcliffe Arena on Wednesday December 8.

Lady Bay's CHEFF and Snail and Rabbit are shortlisted.

[Read more on our website.](#)

Planning applications



The latest planning applications can be viewed on [our website](#).

All the latest information for residents is available on the [Coronavirus webpages](#) or over the phone on 0115 981 99 11.

[Manage Subscriptions](#) | [Unsubscribe All](#) | [Help](#)
Stay Connected with Rushcliffe Borough Council:



This email was sent to susan.mallender@googlemail.com using GovDelivery Communications Cloud, on behalf of: Rushcliffe Borough Council · Rushcliffe Borough Council, Rushcliffe Arena, Rugby Road, West Bridgford, NOTTINGHAM, NG2 7YG

GOVDELIVERY 